



## **Rabbit anti Rho Kinase/ROCKII (Paired T249) Polyclonal Antibody**

**Alternative Name(s): Rho-associated, coiled-coil containing protein kinase 2; ROCK2; ROCK-II**

### **Order Information**

- **Description:** Rho Kinase/ROCKII (Paired T249)
- **Catalogue:** 602-880
- **Lot:** See label
- **Size:** 100ug/200ul
- **Host:** Rabbit
- **Clone:** nan
- **Application:** IHC(P), WB
- **Reactivity:** Hu, Ms, Rt, Ck, Bv, Canis

### **ANTIGEN PREPARATION**

A synthetic peptide corresponding to the epitope -CDTAV- without a phosphorylation site Thr396 of human RockII protein. This sequence is identical among human, mouse, rat, chicken, dog and bovine.

### **BACKGROUND**

Rho A-dependent kinase (ROCKII), or ROK-alpha, is identified a serine/threonine kinase, a downstream effector of the small GTPase Rho, mediating effects of Rho on the actin cytoskeleton, formation of actin stress fibers and focal adhesions, ROCKII alters cardiac myofilament response to Ca<sup>2+</sup> by mechanisms involving phosphorylation of thin filament proteins. ROCK-II induces a depression in maximum ATPase rate and tension, which is associated with phosphorylation of troponin T (TnT), troponin I (TnI), and myosin-binding protein C (C-protein). The phosphorylation of Rho-kinase at Thr 249, Thr 396 plays important role in G-protein signaling..

### **PURIFICATION**

The Rabbit IgG is purified by Epitope Affinity Purification

### **FORMULATION**

This affinity purified antibody is supplied in sterile Phosphatebuffered saline (pH7.2) containing antibody stabilizer

### **SPECIFICITY**

This antibody recognizes ~165 kDa of human ROCKII without a phosphorylation site ofThr249. It does not react to phosphorylated protein. This antibody also reacts with mouse and rat. The other species are not tested.

### **STORAGE**

The antibodies are stable for 24 months from date of receipt when stored at -20oC to -70oC. The antibodies can be stored at 2oC-8oC for three month without detectable loss of activity. Avoid repeated freezing-thawing cycles.

### **APPLICATIONS/SUGGESTED WORKING DILUTIONS\***

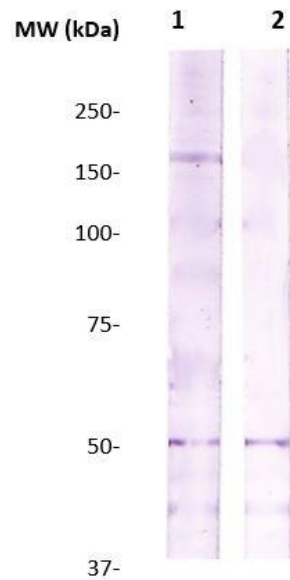
- Western Blot: 0.1-1 µg/ml
- ELISA: 0.01-0.1 µg/ml
- Immunoprecipitation: 2-5 µg/ml
- IHC: 2-10 µg/ml
- Flow cytometry: Not tested
- Molecular Weight: 165.0
- Positive Control: Kidney Tissue
- Cellular Location: Cell Membrane

\*Optimal dilutions should be determined by researchers for the specific applications.

### **FOR RESEARCH USE ONLY.**

AbboMax, Inc 2528 Qume Drive, Suite 8, San Jose, California 95131, USA  
1 408-573-1898 (Tel). 1 408-573-1858 (Fax). [www.abbomax.com](http://www.abbomax.com) [info@abbomax.com](mailto:info@abbomax.com)

**DATA ATTACHMENTS**



Western Blot: The cell lysate derived from 3T3 was immunoprecipitated by Rabbit anti Rho Kinase (Paired T249), (Cat#602-880), then immunoprobed by the same antibody at 1:500 (lane 1). Lane 2 is a negative control. Observed a major immunoreactive band at molecular weight ~165kDa.

**REFERENCES**

**FOR RESEARCH USE ONLY.**